

REMOTE TOTALIZATOR
AIC - RT2
AIC - RT2/KS

888
Instructor

900
Veritas

1000

4000
Veritas

5000
Fuel flow
Master

6000
Swissline

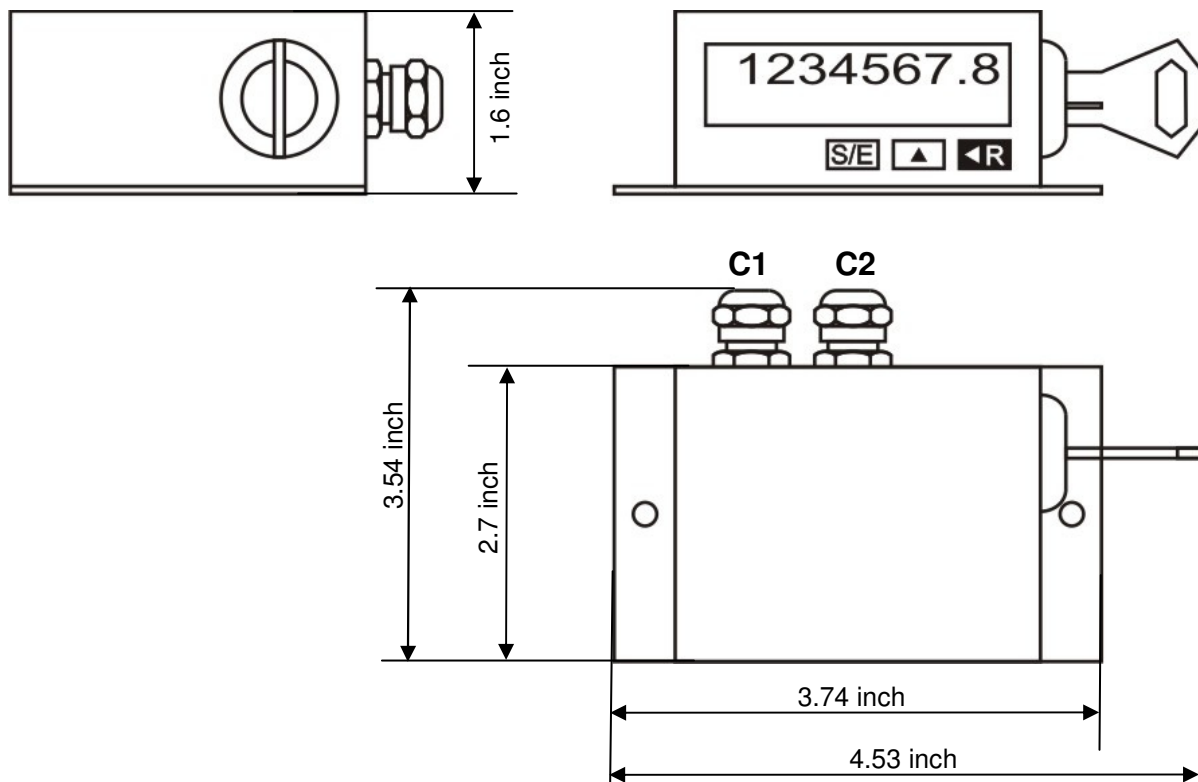
FS

BC 2022
+
Totalisateurs



CE certified
EME Test according to
95/54/CE directives

Product Identification - Dimension



Technical Information

General

Manufacturer	AIC SYSTEMS AG
Commercial designation	Remote totalizer RT2 without zero resetting Remote totalizer RT2/KS with ext. key zero resetting
Dimension (L x l x h)	4.53 x 3.54 x 1.6 inch
Weight	0.700 kg (cables incl.)
Housing material	Stainless Steel, plastic housing (front face)
Protection	IP 65
Temperature range	-10 °C to + 50 °C
Temperature / Humidity	90% RH @ 38 °C

Characteristics

Display type	LCD
Pulse type to be counted	any
Signal level	L < 1VDC H > 5 VDC
Max. signal amplitude	+/- 30 VDC
Input impedance	Approx. 2 MOhm
Max. entry frequency	approx. 10 kHz
Digit height	0.34 inch
Number of digits	8
Power supply	5 to 24 VDC
Back-light	12 VDC upward
Internal battery	Lithium (life expectancy 6 years)

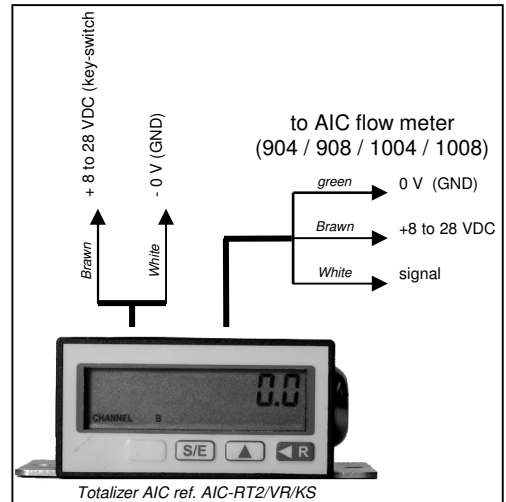
Electrical connection

C1 Power supply cable (ends free wires)

	Pin	Wire colour
Ground (0V)	Pin 31 (GND)	White
+8 to + 28 VDC	Pin 15 (key switch)	Brawn

C2 Sensor cable (Molex connector)

	Wire colour
Flow meter signal	White
Flow meter power supply +8 to 28 VDC	Brawn
Ground (0 V)	Green



Principle of operation

The remote totalizer is delivered fully programmed and ready to use with its flow meter.

The display will show 2 values according to user his choice:

- the total consumed volume since last zero reset with the key switch (RT2/KS) or since the last connection with the flow meter (RT2).
- or
- the instantaneous fuel flow in litres per hour (L/H).

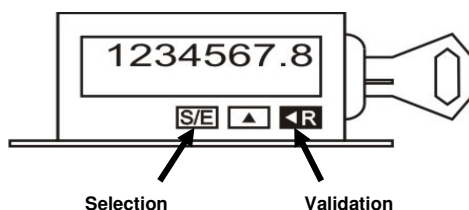
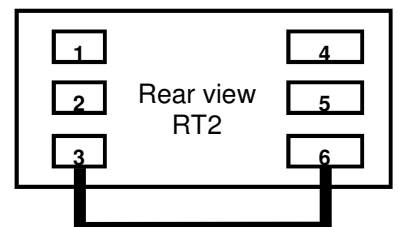
The display selection can be switch from one display to the other by pressing the the **S/E** button on the display face.

Programming / Reconfiguration

If the meter has been manipulated and the initial configuration lost, you can reprogram the RT with original settings in the table below:

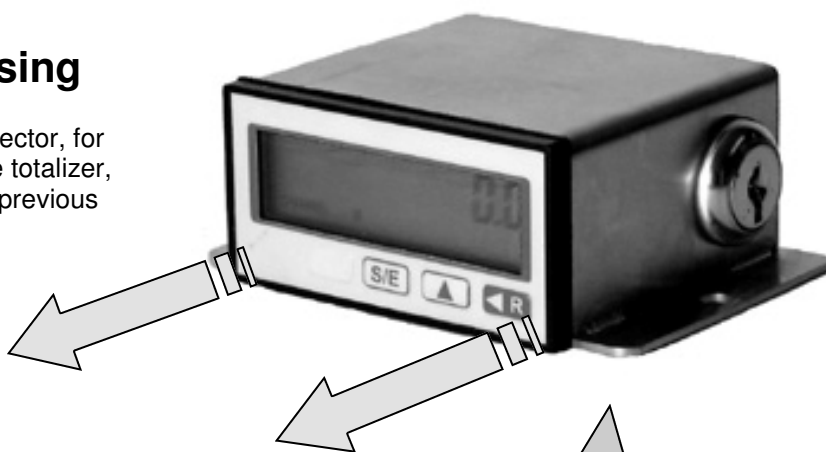
Chanel		GALLON PER HOUR (GPH) SETTING ppg = pulses per gallon		LITER PER HOUR (l/h) SETTING Ppl = pulses per liters	
		AIC-904 VERITAS AIC-1004 LC 200	AIC-908 VERITAS AIC-1008 LC 80	AIC-904 VERITAS AIC-1004 LC 200	AIC-908 VERITAS AIC-1008 LC 80
	RATE				
A	UNIT	GPH	GPH	l/h	l/h
A	ACCUR	1%	1%	1%	1%
A	SPC	757	303	200	80
A	SF	1	1	1	1
A	T-OUT	5	5	5	5
A	SPEED	HI	HI	HI	HI
	COUNTER				
B	SPEED	HI	HI	HI	HI
B	SF		0.3311	0.5	0.125
B	DP	0.0	0.0	0.00	0.0
B	RES	OFF	OFF	OFF	OFF

In order to program the RT remove the counter from the stainless steel housing and connect the terminals 3 and 6, as shown below:



Opening of the SS casing

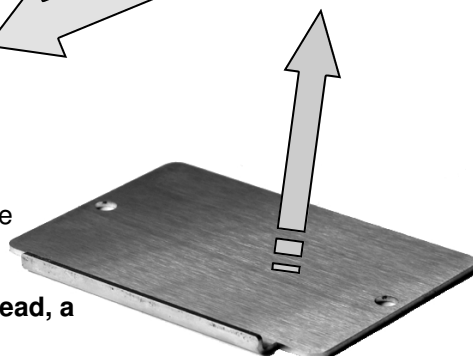
In order to access the electrical connector, for the set-up of the totalizer, pull out the totalizer, and proceed as per described in the previous pages.



Securing the RT2

The RT2 can be secured, in order not to access the electrical connector on the back. Use the SS plate delivered, this can be screwed below the RT2 on the dashboard.

Secure the screws : put a droplet of paint in the screws head, a violation of the counter will be immediately seen.



Ordering structure

Totalizer

AIC-RT2

without zero resetting

Références

1550.0

AIC-RT2/KS

with external key zero resetting

1570.0

AIC SYSTEMS AG
Postfach / P.O. Box 341
Ringstrasse 9
CH - 4123 Allschwil
Switzerland

T +41 61 841 84 39
F +41 61 841 84 40
M +41 79 212 28 31

www.flowmeter-aic.com
info@flowmeter-aic.com

AIC SYSTEMS AG
Switzerland

Automotive Information and Control Systems